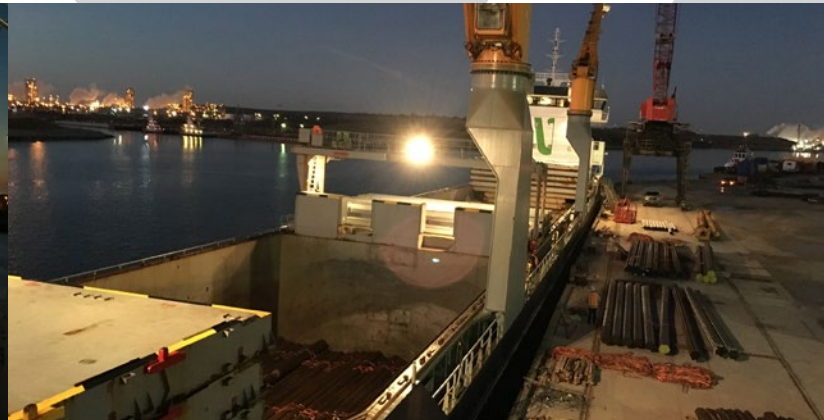
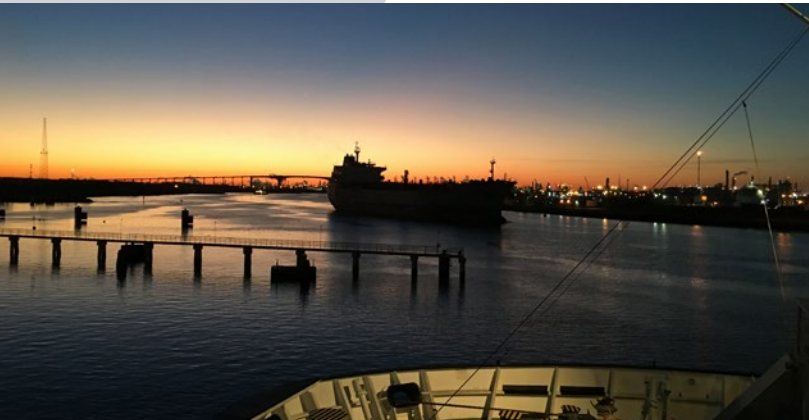


Industrial Terminal

HOUSTON, TEXAS



Industrial Terminal is ideally located on the north shore of the Houston Ship Channel at Greens Bayou. Quick access is available to Interstate 10 via Industrial Road and Federal Road.



SERVICES OFFERED

- Cargo handling
- Transloading
- Rail Car and Barge Loading
- FTZ
- USDA
- Intermodal
- Warehousing
- Outdoor storage

EQUIPMENT

- Cranes
- Top loaders
- Reach Stackers
- Specialized Heavy Haul Transporters
- Forklifts
- Fabrication shop for manufacture of custom lift equipment
- Certified truck scale

TYPES OF CARGO

- General cargo
- Containers
- Project cargo
- Steel commodities
- Wind
- Bulk products

INLAND CONNECTIONS

- Rail serviced by UP, BNSF, KCS direct served through PTRS
- Close proximity to Interstate, I-10, I-45
- Access to Intercoastal waterway

GENERAL MANAGER
David Harrington
(713) 289-2368
davidh@gulfstreammarine.com

CARGO SERVICES MANAGER
Victoria Ibarra
(713) 289-2133
victoriai@gulfstreammarine.com

GULF STREAM MARINE INC.
10000 Manchester St.
Houston, Texas 77012
info@gulfstreammarine.com